



## SMP 4 Gateway: A Compact and Economical Member of the SMP Gateway Family

The SMP 4 Gateway is ideal for applications where space is at a premium. Installed directly in protective relay enclosures, this compact and economical member of the SMP Gateway family of products provides essential communication and data concentration features, along with an exceptional operating temperature range. Moreover, the optional internal modem connects the SMP 4 Gateway to your network and SCADA via dialup connection.

The SMP Gateway bridges the gap between substations and the people who maintain, engineer and plan the future of the enterprise.

- Extract and concentrate data from any device, regardless of protocol
- Send data to SCADA, control centers and any other centralized management applications
- Automate data processing and device control
- Provide secure remote access to any device

### Upgrade your infrastructure, not your RTUs

- Integrate existing / legacy RTUs, IEDs, PLCs, and multiple control centers
- Universal port lets you connect any serial device

### Add intelligent controls to your equipment

- Use the built-in Logic Processor and the optional Soft PLC to extend the capabilities of legacy devices

### Strengthen cyber-security

- Implements NERC CIP-compliant electronic perimeter with local and global authentication
- Integrates with corporate Active Directory
- Secure TLS (SSL) communications

### All-in-one tough box

- Meets all IEEE requirements for substation-grade equipment
- Advanced architecture saves rack space

### Provide a single point of access

- Create a homogenous system with a single point of access for all substation data
- Extract non-operational data for planning, maintenance, engineering, and fault analysis

### Work with the experts

- We have decades of experience in substation gateway design
- Thousands of installed systems worldwide
- SMP Gateway is rugged, reliable and tailored to our client's needs

### You can depend on it

- Our SMP Gateway field-proven
- Easy to setup and use
- Includes user-friendly configuration tools that simplify substation upgrades

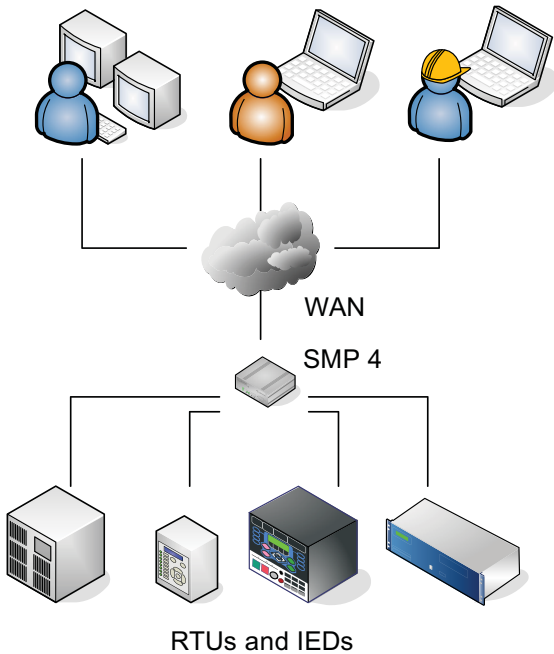
General Features
Data concentration
Protocol translation
NERC CIP-compliant security
Built-in web server
Automation functions
Passthrough connections
Dialup connection
IEC-61131 compatible Soft-PLC
Windows®-based configuration and maintenance tools
Built-in self-diagnostics
Real-time clock with battery backup
Built-in watchdog timer
Power supply monitoring
Flexible Licensing
Protocols
DNP3, IEC 60870-5-101/103/104, IEC 61850, UCA 2.0, ICCP, MODBUS, SEL, GE, ABB, L&G, COOPER, CONITEL 2020 and other bit protocols, most electrical industry proprietary protocols, OPC

Communications
Serial: 1 universal (RS-232/422/485) 3 RS-232 1 RS-232 console
Ethernet: 10/100BASE-TX
Modem: Optional 33.6 Kbps V.34 (replacing 1 RS-232 serial communication port)
Standards Compliance
Protective Relay Standards IEEE C37.90 <sup>1</sup> IEC 60255
<sup>1</sup> With few exceptions
EMI Immunity Type Tests and Specifications IEC-61850-3 IEEE-1613
Telephone Terminal Equipment TIA-968-A CS-03
CE Marking for Low Voltage Electrical Equipment
Unit test list available upon request

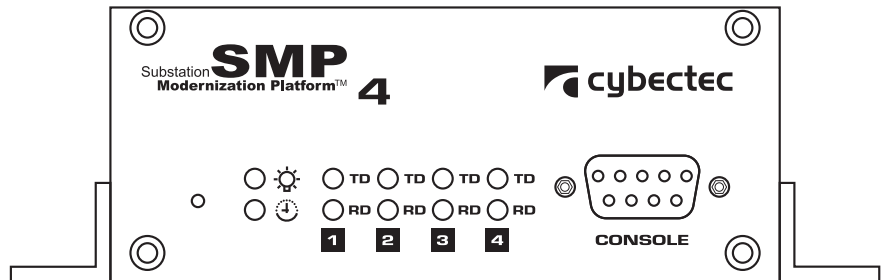
Security Features
Built-in firewall and VPN
Modem connection management
Passthrough management
Account management: Strong passwords User accounts and user groups Detailed group permissions
Access management
Access attempts logs
Account lock upon failed access attempts
Retrievable access logs for auditing
All system components signed
Continuous file monitoring for system integrity
Connectivity
Up to 16 device connections
Up to 4 control center connections
Up to 5 000 data points
Warranty
5-Year Limited Warranty

Environmental
Operating (at CPU 100% usage): -40°C to +65°C (-40°F to +149°F)
Storage: -40°C to +85°C (-40°F to +185°F)
Humidity: 5 to 95%, non-condensing
Low pressure (operation and storage altitude): Up to 4572 m (15,000 ft) <sup>1</sup>
<sup>1</sup> MIL-STD-810G Method 500.5 Procedure I and II
Electrical
Power supply options: 9-18 VDC 36-72 VDC 85-264 VAC / 105-370 VDC
5 W consumption
Lifetime built-in battery
Mechanical
1.77 in. H x 4.27 in. W x 6.3 in. L 45 mm H x 108.5 mm W x 160 mm L 1 kg / 454 g

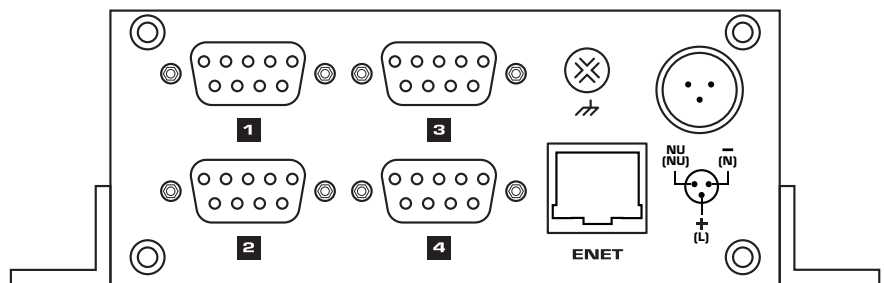
### SCADA/EMS/OMS ENGINEERING MAINTENANCE



Front View



Rear View



Cooper Power Systems and SMP are trademarks of Cooper Industries in the U.S. and other countries. You are not permitted to use Cooper trademarks without the prior written consent of Cooper Industries. Microsoft® Windows® are registered trademarks of Microsoft Corporation in the United States and/or other countries. ©2010 Cooper Industries. All Rights Reserved.

**Quebec City**  
730 Commerciale Street, Suite 200  
Saint-Jean-Chrysostome, Quebec  
Canada G6Z 2C5  
**Technical support:**  
P: +1.418.834.0009  
support@cybectec.com

**Montreal**  
1290 St. Denis Street, Suite 300  
Montreal, Quebec  
Canada H2X 3J7  
**Sales:**  
P: +1.514.845.6195  
sales@cybectec.com